

# **Sustainability and Integrated Appraisal: approaches and issues**

**RDA Health and Sustainability Study Visit  
London 17-18<sup>th</sup> January 2006**

**Matthew Wilkinson  
Sustainable Development Policy Team  
North West Regional Assembly  
<http://www.actionforsustainability.org>**

# Overview

- Sustainability appraisal and Integrated appraisal
- Observations
- Health and integrated appraisal – environmental equity study
- Future

# Sustainability and Integrated Appraisal

- Sustainability Appraisal (SA) and Integrated Appraisal (IA) are very similar.
- UK Sustainable Development principles - “*Securing the Future*”
  - Sustainable economy
  - Good governance
  - Sound science
  - Will give us:
    - Healthy, strong and just society
    - Living within environmental limits
- Regional Sustainable Development Framework: *Action for Sustainability* (AfS)
  - 10 priorities for the NW
- SA and statutory duties

# NW toolkit

- Consists of 26 objectives (plus range of sub-questions)
- Developed originally to help decision-makers, policy-makers, planners and investors.
- Assessing contribution to the regional priorities for sustainable development through AfS.
- Lead by a steering group to ensure regional commitment: GO-NW, NWDA, EA, NWRA.
- Currently being updated to reflect new AfS priorities and to develop AfS indicators to take account of recent sustainability appraisal and SEA guidance.

# Different approaches

- Subject areas:
  - Health Impact Assessment
  - Developments
  - Equality and Diversity
  - Economic development
  - Social inclusion
  - Rural Proofing
  - Future Proofing
  - Climate Proofing
  - Age Proofing
- Localities
  - Toolkits for Lancashire, Cumbria, Lancaster City
- Statutory and/or Legal requirements
  - SA/SEA

# Some observations about Sustainability or Integrated Appraisal

- It's a starting point that can be adapted.
- The methodology is important, and must consider: not just what you do, but how you do it.
  - interactive, interdisciplinary workshops
  - policy – appraisal split - avoiding bias.
- Scoring system needs careful consideration.
- Often in-house best. Though it should involve participation from outside bodies; e.g. LSPs, local representation forums.
- Not always: independence is a good thing.
- Must consider: integration; equity; futurity.

# Further observations about SA

- SA is a major feature of the reformed planning system.
- It's integrated – e.g. EIA which is a retrospective analysis conducted after development plan production
- Currently, there's a gulf between the theory (and gov't guidance) and the practice:
  - most SA reports are larger than the plans they appraise
  - need to keep it simple vs avoid legal challenge
  - reliance on subjective judgement and baseline data
  - need for third party review (bring in outsiders)
- Strategic Environmental Assessment (SEA) and Regional Strategies (RSS and RES).

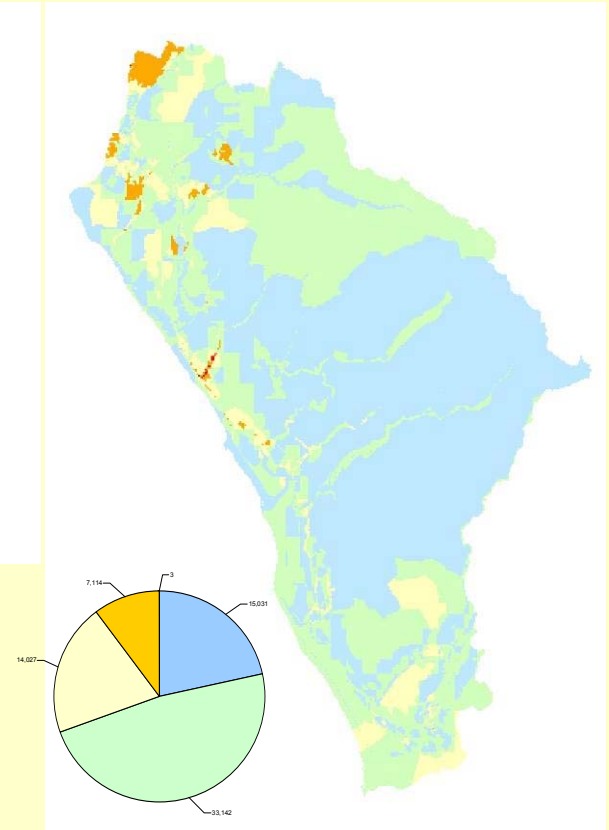
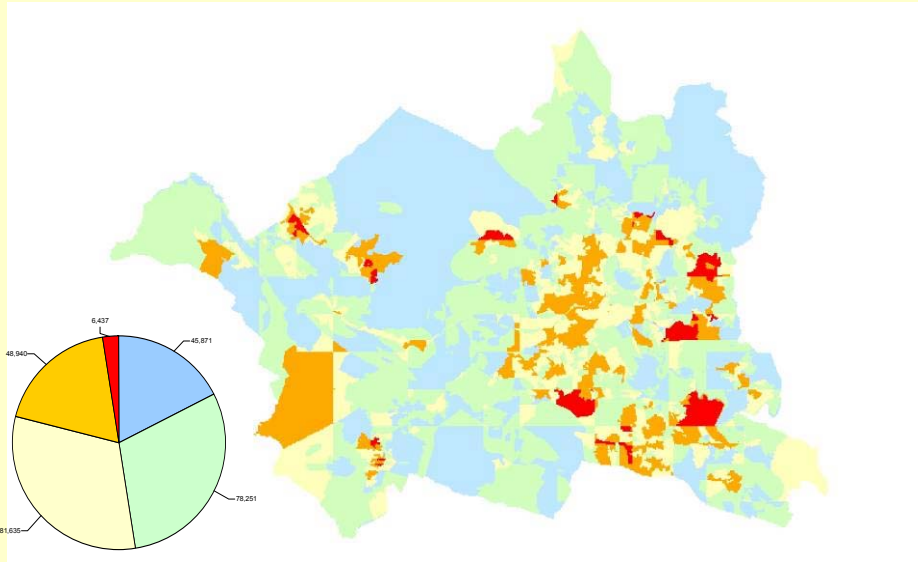
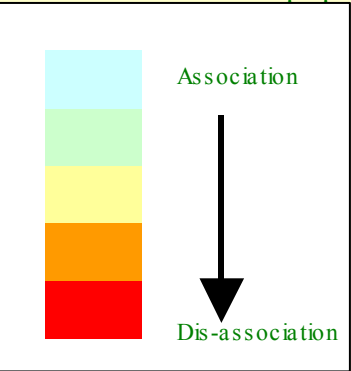
# Environmental Equity Study

- Linking spatial planning to health – do links exist?
- If nobody lives in (or near) areas of low environmental quality, does it really matter?
- How many people are affected by poor environmental quality?
- Are these same people effected by poor health / deprivation?
- Environmental Equity study by The Environment Partnership, Environment Agency & Forestry Commission.

# Environmental Equity

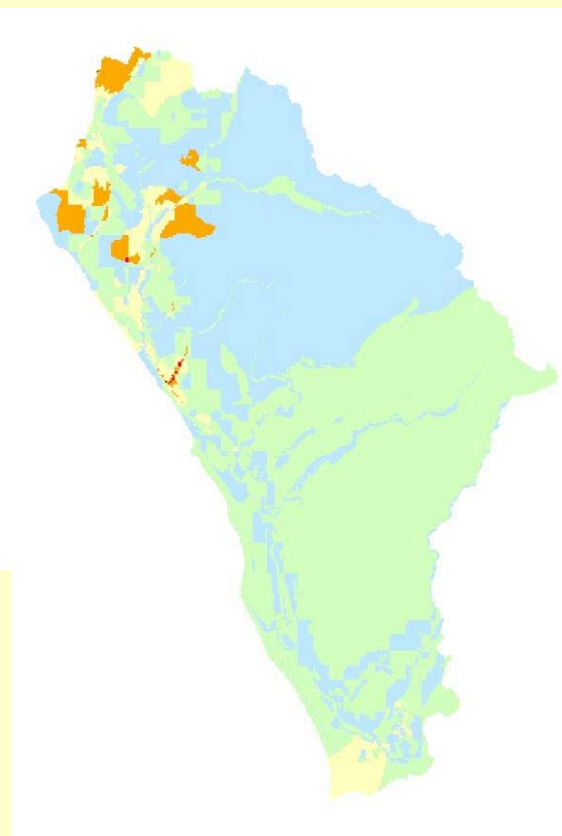
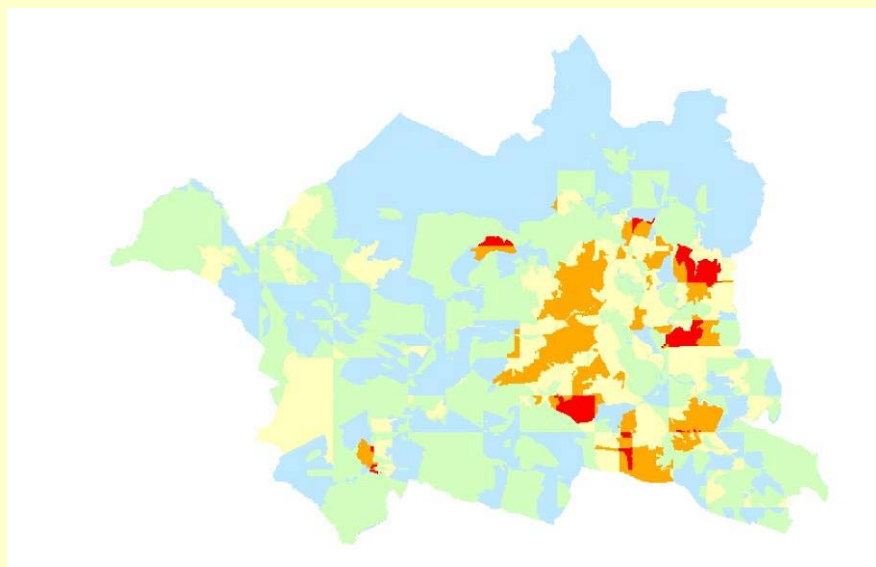
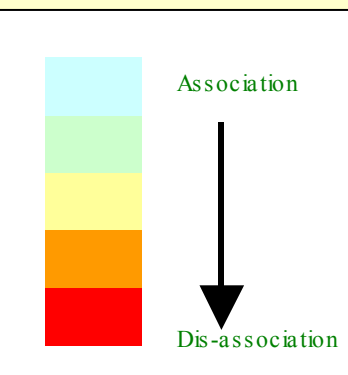
## Association between health and environmental quality

Pie charts indicate population



# Environmental Equity

Association between deprivation and environmental quality



# Future of appraisal in the NW

- Tailored toolkits for the following areas:
  - Sustainability Checklist for Developments (BRE, WWF and SEEDA) – NW version
  - community strategies
  - SEA use. IAT can be used for SEA which is happening at the regional level for RSS. Entec Matrix.
- Questions/criteria should be broadly useful, but adaptable to sub-regional and local levels and other circumstances.
- Updating and On-line version, building on the East of England work and developed by UK CEED:  
<http://www.toolkit-east.org.uk>